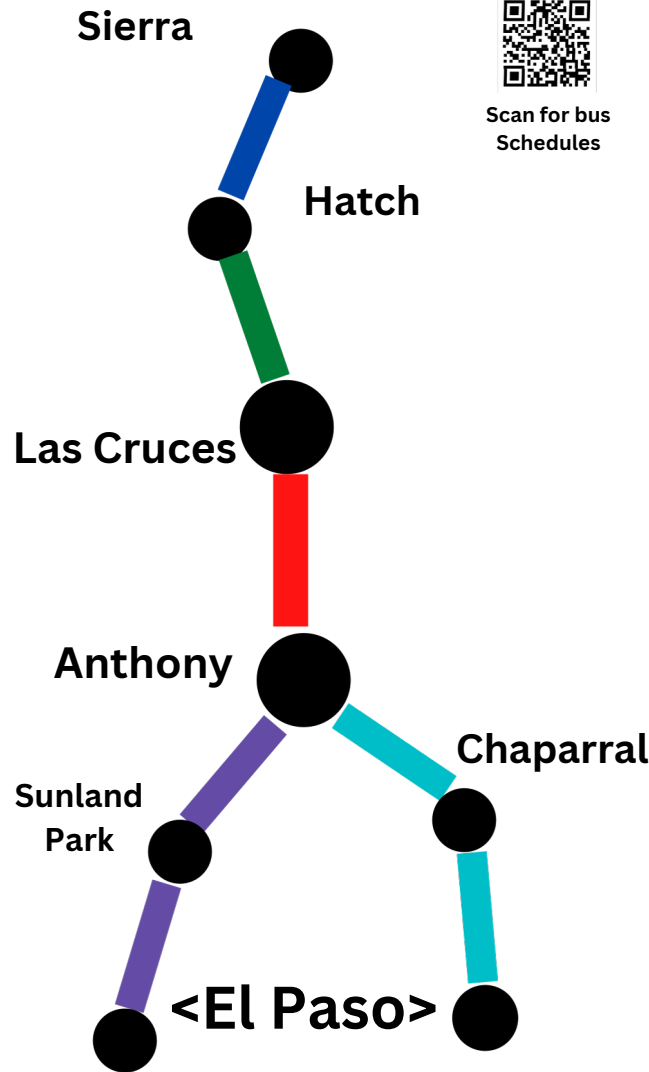


# Where can you GO!

*From Las Cruces to Hatch, Hatch to Sierra County, Anthony, Chaparral, Sunland Park and El Paso, discover the way to go on one of the new SCRTD buses. WIFI Available on every bus.*

*Desde Las Cruces hasta Hatch, Hatch to Sierra County, Anthony, Chaparral, Sunland Park y El Paso, descubra el camino a seguir en uno de los nuevos autobuses de SCRTD. WIFI disponible en todos los autobuses.*



Scan for bus Schedules



# GO RED!

## Connecting Our Communities

### Route Schedule & Map

Effective June 2026



*All routes are identified by color and offer several stops in between buses start and return to the same location.*

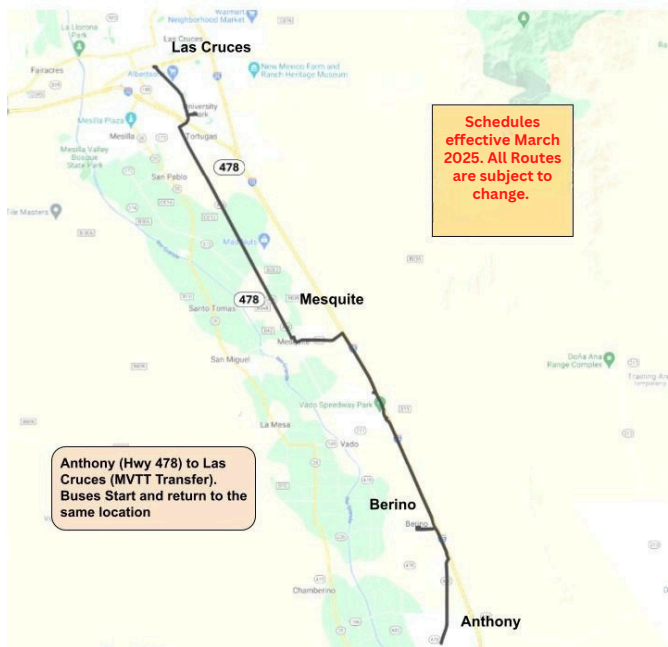
*Todas las rutas están identificadas por colores y ofrecen varias paradas entre el inicio y el regreso de los autobuses al mismo lugar.*

# Red Line/Linea Roja



Red Line / Linea Roja												
Monday through Friday												
RED ROUTE (NORTHBOUND)												
1	Anthony Transfer	6:20	7:00	8:00	9:00	10:00	12:00	1:00	2:00	3:00	4:00	5:00
2	Berino Park	*	7:11	8:11	9:11	10:11	12:11	1:11	2:11	3:11	4:11	5:11
3	Del Cerro/Cristo Rd	*	7:19	8:19	9:19	10:19	12:19	1:19	2:19	3:19	4:19	5:19
4	Mesquite Elementary	*	7:29	8:29	9:29	10:29	12:29	1:29	2:29	3:29	4:29	5:29
5	Union & Oak	*	7:42	8:42	9:42	10:42	12:42	1:42	2:42	3:42	4:42	5:42
6	NMSU @ Gerald Thomas Hall	*	7:47	8:47	9:47	10:47	12:47	1:47	2:47	3:47	4:47	5:47
7	MVITT Las Cruces Transfer	7:00	8:00	9:00	10:00	11:00	1:00	2:00	3:00	4:00	5:00	6:00
RED ROUTE (SOUTHBOUND)												
7	MVITT Las Cruces Transfer	7:00	8:00	9:00	10:00	11:00	1:00	2:00	3:00	4:00	5:00	6:00
6	NMSU @ Gerald Thomas Hall	7:08	8:08	9:08	10:08	11:08	1:08	2:08	3:08	4:08	5:08	*
5	Union & Oak	7:13	8:13	9:13	10:13	11:13	1:13	2:13	3:13	4:13	5:13	*
4	Mesquite Elementary	7:26	8:26	9:26	10:26	11:26	1:26	2:26	3:26	4:26	5:26	*
3	Del Cerro/Cristo Rd	7:36	8:36	9:36	10:36	11:36	1:36	2:36	3:36	4:36	5:36	*
2	Berino Park	7:44	8:44	9:44	10:44	11:44	1:44	2:44	3:44	4:44	5:44	*
1	Anthony Transfer	8:00	9:00	10:00	11:00	12:00	2:00	3:00	4:00	5:00	6:00	7:00

Route break at Anthony transfer 11:00 am-12:00pm



Anthony Transfer to Las Cruces Buses start and return to the same location

Contact SCRTD at: (575) 323-1620

[www.scrted.org](http://www.scrted.org)

All Routes subject to change

FREE Fare starting June 30, 2025 until December 31, 2026

Fare collection will begin on January 1, 2027.

Red Line/ Linea Roja					
Saturday					
RED ROUTE (NORTHBOUND)					
1	Anthony Transfer	9:00	11:00	2:00	4:00
2	Berino Park	9:11	11:11	2:11	4:11
3	Del Cerro	9:19	11:19	2:19	4:19
4	Mesquite Elementary	9:29	11:29	2:29	4:29
5	Union & Oak	9:42	11:42	2:42	4:42
6	NMSU	9:47	11:47	2:47	4:47
7	MVITT Las Cruces Transfer	10:00	12:00	3:00	5:00
RED ROUTE (SOUTHBOUND)					
7	MVITT Las Cruces Transfer	10:00	12:00	3:00	5:00
6	NMSU	10:08	12:08	3:08	5:08
5	Union & Oak	10:13	12:13	3:13	5:13
4	Mesquite Elementary	10:26	12:26	3:26	5:26
3	Del Cerro	10:36	12:36	3:36	5:36
2	Berino Park	10:44	12:44	3:44	5:44
1	Anthony Transfer	11:00	1:00	4:00	6:00

Route break @ Anthony Transfer from 1:00pm-2:00pm

